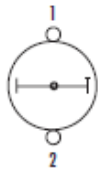


SNAP ACTION SWITCHES

CIRCUIT SELECTION

CIRCUIT NO. 1



POLE	DECK	CONTACTS HANDLE END	POSITIONS			
			1	2	3	4
1	1	1 — — — — 2		X		X



Unlimited Positions
Standard Indexing

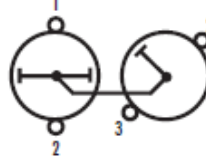


2 Positions
Standard Indexing



2 Positions
Indexing Offset 45°

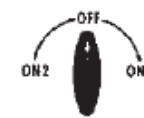
CIRCUIT NO. 2



POLE	DECK	CONTACTS HANDLE END	POSITIONS			
			1	2	3	4
1	1 & 2	1 — — 2 — — 3		X		
						X

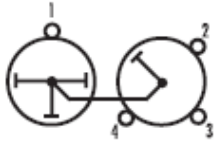


Unlimited Positions
Standard Indexing



3 Positions
Standard Indexing

CIRCUIT NO. 3



POLE	DECK	CONTACTS HANDLE END	POSITIONS			
			1	2	3	4
1	1 & 2	1 — — 2 — — 3 — — 4		X		
					X	
						X

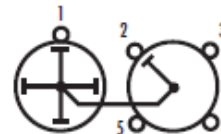


Unlimited Positions
Standard Indexing



3 Positions
Standard Indexing

CIRCUIT NO. 4



POLE	DECK	CONTACTS HANDLE END	POSITIONS			
			1	2	3	4
1	1 & 2	1 — — 2 — — 3 — — 4 — — 5		X		
					X	
						X

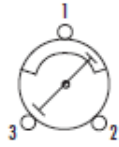


Unlimited Positions
Standard Indexing

CIRCUIT NO. 6



Unlimited Positions
Standard Indexing



2 Positions
Standard Indexing

2 Positions
Indexing Offset 45°

POLE	DECK	CONTACTS HANDLE END	POSITIONS			
			1	2	3	4
1	1		X	X	X	X

CIRCUIT NO. 7



3 Positions
Standard Indexing



POLE	DECK	CONTACTS HANDLE END	POSITIONS		
			1	2	3
1	1		X		X