



**ELECTROSWITCH**  
UNIT OF ELECTRO SWITCH CORP.  
WEYMOUTH MASSACHUSETTS 02188  
TEL<781>335-5200 FAX<781>335-4253

### SERIES 24 LOCK-OUT RELAY

- MANUAL RESET
- HIGH SPEED ELECTRIC RESET
- ELECTRIC RESET

CATALOG NO. \_\_\_\_\_

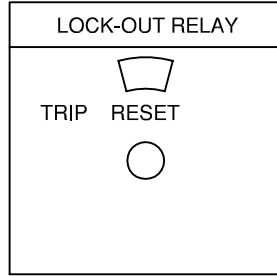
ENGRAVING CODE: \_\_\_\_\_

17C-2L22

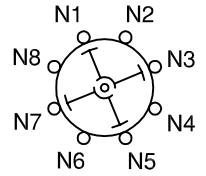
#### CONTACT DIAGRAM

DECK	CONTACTS	POSITION	
		TRIP	RESET
1	11 O-H-I-O 13		X
	12 O-H-I-O 18	X	
	15 O-H-I-O 17		X
	14 O-H-I-O 16	X	
	O-H-I-O		
	O-H-I-O		
	O-H-I-O		
	O-H-I-O		
	O-H-I-O		
	O-H-I-O		
	O-H-I-O		
	O-H-I-O		
	O-H-I-O		
	O-H-I-O		
	O-H-I-O		
	O-H-I-O		
	O-H-I-O		
	O-H-I-O		
	O-H-I-O		
	O-H-I-O		
	O-H-I-O		
	O-H-I-O		
	O-H-I-O		
	O-H-I-O		
	O-H-I-O		
	O-H-I-O		
	O-H-I-O		
	O-H-I-O		

#### NAMEPLATE ENGRAVING



#### CONTACT DECK LAYOUT



N = DECK NUMBER

#### TRIP COIL NOMINAL VOLTAGE

- A - 24 VDC
- B - 24 VDC
- C - 48 VDC
- D - 125 VDC
- E - 125 VDC
- F - 250 VDC
- G - 125 VDC
- H - 250 VDC
- K - 125 VDC

DEPTH BEHIND PANEL: \_\_\_\_\_

PANEL THICKNESS: \_\_\_\_\_

#### RESET COIL NOMINAL VOLTAGE

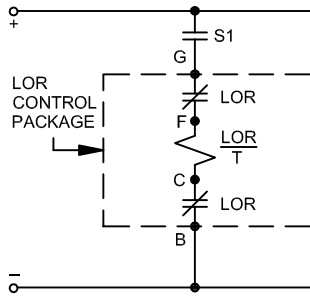
- A - 24 VDC
- C - 48 VDC
- D - 125 VDC
- F - 250 VDC

OTHER: \_\_\_\_\_

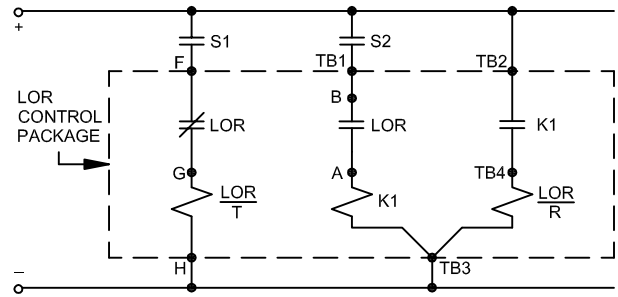
#### CONTROL CIRCUIT SCHEMATICS

SHOWN IN RESET POSITION

##### MANUAL RESET LOR



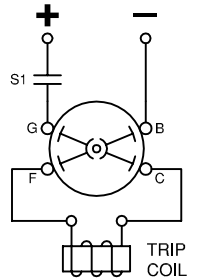
##### ELECTRIC RESET LOR/ER



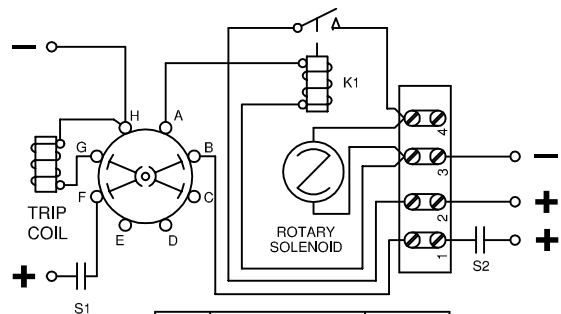
#### WIRING DIAGRAMS - TRIP & RESET CIRCUITS

SHOWN IN RESET POSITION

##### MANUAL RESET LOR



##### ELECTRIC RESET LOR/ER



INTERRUPTER DECK	CONTACTS	POSITION	
		TRIP	RESET
	B O-H-I-O C		X
	F O-H-I-O G		X

INTERRUPTER DECK	CONTACTS	POSITION	
		TRIP	RESET
	F O-H-I-O G		X
	A O-H-I-O B	X	

MADE BY: \_\_\_\_\_

DATE: \_\_\_\_\_

COMPANY: \_\_\_\_\_

DWG NO. \_\_\_\_\_

REV \_\_\_\_\_

APPROVED BY: \_\_\_\_\_

DATE: \_\_\_\_\_

SHEET OF \_\_\_\_\_