



SERIES 21 DETENT-ACTION ROTARY SWITCHES

Features

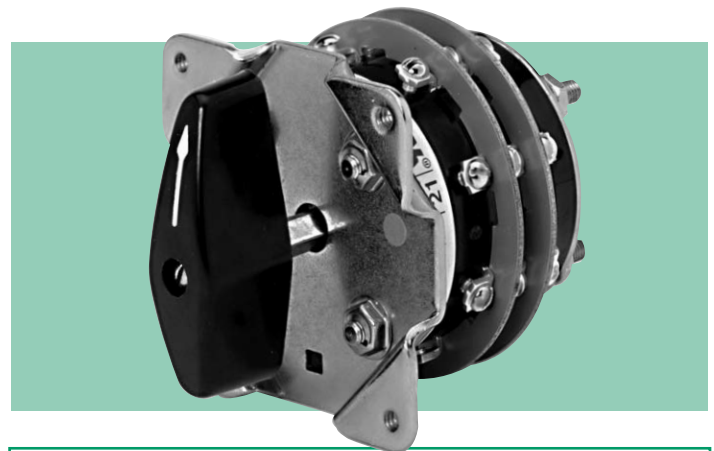
- Double-Sided, Double-Wiping, Knife-Type Rotary Contacts
- Silver Contact Surfaces for Long, Reliable Life
- Terminal Screws — Easy Installation
- Four Hole Mount

Control Switch Special Features

- Spring Return to Normal (Vertical) Position

Instrument Switch Special Features

- Make-Before-Break (Shorting Contacts)
- Common Input Tap Switch Arrangement — Sequentially Connected to Several Lines Using the Same Switching Deck
- Positive Positioning, Maintained Action Detent Mechanism



Electrical Specifications

Interrupt Ratings

- 15A/120VAC
- 4A/600VAC
- 7.5A/240VAC
- Overload Current (50 operations): 30A/125VAC Resistive
- Voltage Breakdown: 2200V rms minimum
- Insulation Resistance: 100 Megohms minimum
- Contacts Resistance: 10 milliohms maximum

Mechanical Specifications

Sections	1 to 30
Poles	1 to 60
Positions	8; Adjustable Stops for 2–8 Position Rotation
Contacts	Break-Before-Make (Non-Shorting); Make-Before-Break (Shorting)
Action	45° Positive Detent Indexing
Mounting	4-Hole
Panel Thickness	3/16" Max. Standard
Rotor Contacts	Silver Plated Phosphor-bronze, Double Grip
Stationary Contacts	Silver Plated Copper, w/Integral Screw Type Terminals
Construction	Contacts Enclosed in Molded-phenolic Disks

Approvals

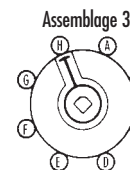
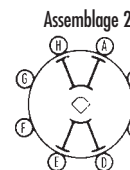
- UL File No. E18174
- CSA File #LR20743

Variations

For Key Lock Handle, Key Operated Handle, Solenoid Lock Handle, Push-to-Turn, Spring Return or Waterproof Mount Switches please see page 18.

ORDERING INFORMATION -

Four Hole Mount Assemblies



Note 1: Nominal torques, weights, and depth behind panel are listed below.

Note 2: Assemblies are shown with handle in 0° position (12 o'clock).

Model No. **21**

Series

Assemblage

Standard 2 and 3

Consult Factory for Other Assemblies

Handle

A = Flush

B = Oval Shank

C = Round Knurled

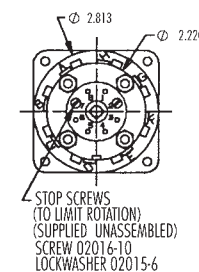
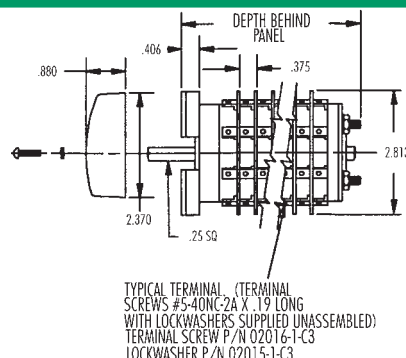
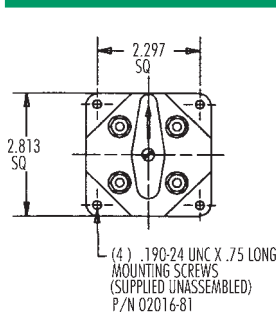
D = Pistol Grip

Shorting

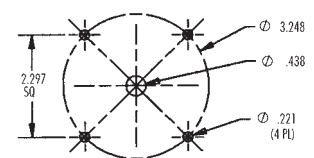
Blank = No

S = Yes

Matrix Code	No. of Sections	Weight (lbs)	Torque (lbs/in)	Depth Behind Panel
01 =	1	1.1	8	2.00
02 =	2	1.2	9	2.34
03 =	3	1.3	10	2.72
04 =	4	1.4	11	3.09
05 =	5	1.5	12	3.47
06 =	6	1.6	13	3.72
07 =	7	1.7	14	4.22
08 =	8	1.8	15	4.59
09 =	9	1.9	16	4.97
10 =	10	2.0	17	5.34
11 =	11	2.1	18	5.59
12 =	12	2.2	19	6.09
13 =	13	2.3	20	6.47
15 =	15	2.8	29	7.72
20 =	20	3.4	34	9.47
25 =	25	4.0	39	11.47
30 =	30	4.9	57	14.09



PANEL DRILLING DIMENSIONS



NOTE: FOR WATERPROOF MOUNTING.
 Ø .64 CENTER HOLE
 Ø .201 MOUNTING HOLES (4 PL)
 DO NOT CHAMFER MOUNTING HOLES.