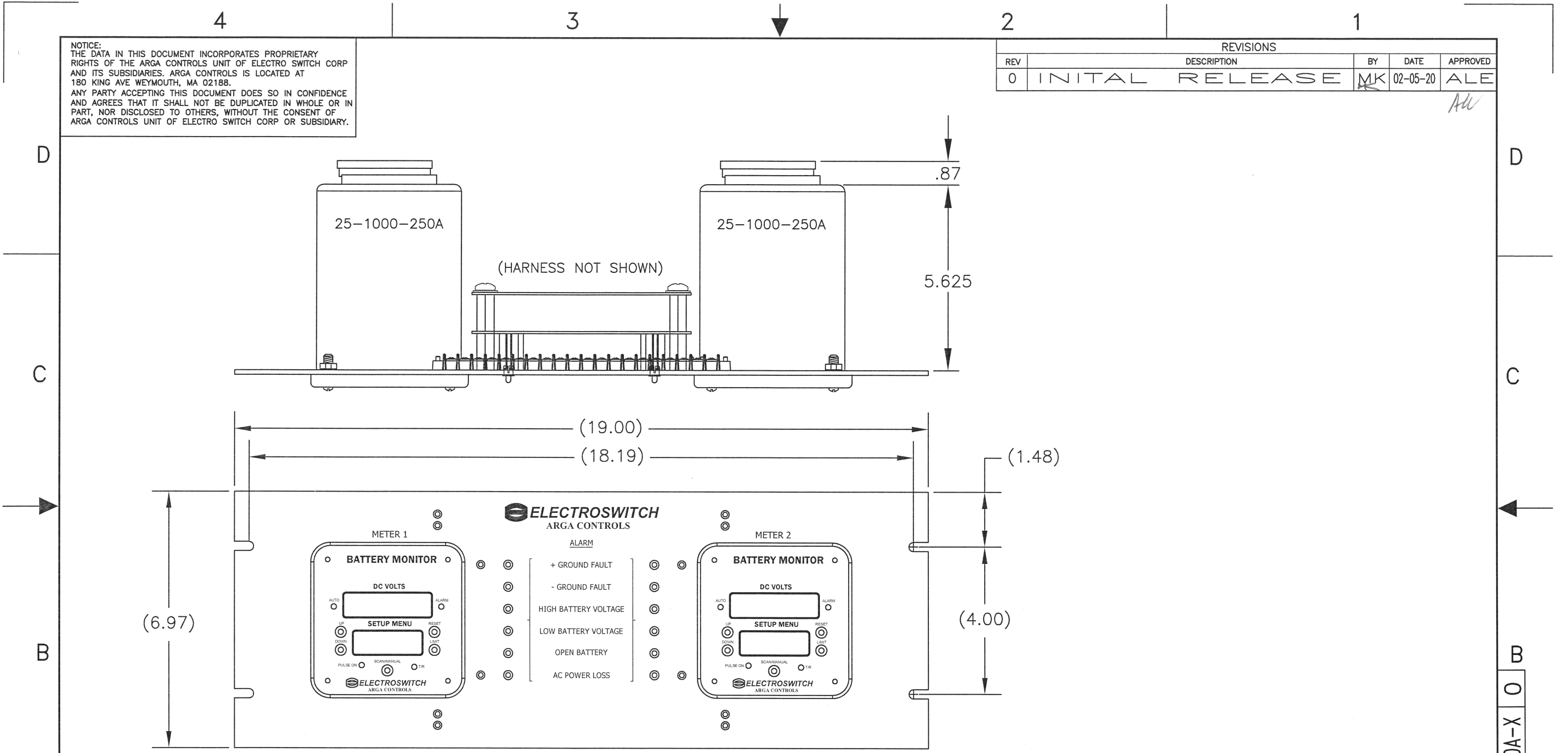


NOTICE:
 THE DATA IN THIS DOCUMENT INCORPORATES PROPRIETARY RIGHTS OF THE ARGUMENTS UNIT OF ELECTRO SWITCH CORP AND ITS SUBSIDIARIES. ARGUMENTS IS LOCATED AT 180 KING AVE WEYMOUTH, MA 02188.
 ANY PARTY ACCEPTING THIS DOCUMENT DOES SO IN CONFIDENCE AND AGREES THAT IT SHALL NOT BE DUPLICATED IN WHOLE OR IN PART, NOR DISCLOSED TO OTHERS, WITHOUT THE CONSENT OF ARGUMENTS UNIT OF ELECTRO SWITCH CORP OR SUBSIDIARY.

REVISIONS				
REV	DESCRIPTION	BY	DATE	APPROVED
0	INITIAL RELEASE	MK	02-05-20	ALE



15-1000-250A-2 SHOWN
 15-1000-250A-1 CONTAINS 1 METER IN METER 1

NOTES: UNLESS OTHERWISE SPECIFIED (SEE SHEET 2)

QTY REQD	CAGE CODE	PART OR IDENTIFYING NO.	NOMENCLATURE OR DESCRIPTION	MATERIAL/SPECIFICATION	ITEM NO.
PARTS LIST					
UNLESS OTHERWISE SPECIFIED: DIMENSIONS ARE IN INCHES TOLERANCES DECIMALS .XX ± .03 .XXX ± .015 ANGULAR ± 30° DO NOT SCALE DRAWING			APPROVALS DRAWN MK CHECKED ENGRG ALE QA	DATE 02-05-20 02-05-20	ARGUMENTS ELECTRO SWITCH CORP. TITLE ASSY. PANEL MOUNTED, DUAL BATTERY MONITOR 250VDC
UNLESS OTHERWISE SPECIFIED THE SURFACE FINISH OF MACHINED PARTS SHALL NOT EXCEED A MAX READING OF 125 PER ANSI B46.1-1978					
NEXT ASSY		USED ON	SCALE: NTS		CAD FILE: 15-1000-250A-X REV 0 SHEET 1 OF 2

15-1000-250A-X 0 B A

NOTICE:
 THE DATA IN THIS DOCUMENT INCORPORATES PROPRIETARY RIGHTS OF THE ARGA CONTROLS UNIT OF ELECTRO SWITCH CORP AND ITS SUBSIDIARIES. ARGA CONTROLS IS LOCATED AT 180 KING AVE WEYMOUTH, MA 02188
 ANY PARTY ACCEPTING THIS DOCUMENT DOES SO IN CONFIDENCE AND AGREES THAT IT SHALL NOT BE DUPLICATED IN WHOLE OR IN PART, NOR DISCLOSED TO OTHERS, WITHOUT THE CONSENT OF ARGA CONTROLS UNIT OF ELECTRO SWITCH CORP OR SUBSIDIARY.

REVISIONS				
REV	DESCRIPTION	BY	DATE	APPROVED
/	SEE SHEET 1	/	/	/

1. BATTERY INPUT: 100 TO 360 VDC, 5 VA
2. GROUND RESISTORS: 60.5 K Ω , \pm 1%.
3. DISPLAYED MEASUREMENTS:
 A: BATTERY VOLTAGE
 B: +BUS TO GROUND
 C: -BUS TO GROUND
 D: GROUND FAULT VOLTAGE (GFV)
 E: RIPPLE VOLTAGE (RVV)
 F: RIPPLE CURRENT (W/ OPTIONAL SENSOR) (RIV)
 G: TIME DELAY (SEC) (TD)
 H: CHARGER PHASE (1 ϕ OR 3 ϕ)
 FORMAT: 0 TO 400 VDC, BRIGHT RED LED NUMERIC DISPLAY, PLUS FIVE LETTER ANNOTATION AND CONFIGURATION DISPLAY.
4. SCANNING:
 IN MANUAL MODE MEASUREMENT IS SELECTED BY BRIEFLY PUSHING THE SCAN/SELECT BUTTON.
 IN SCAN MODE THE DISPLAY CYCLES THROUGH ALL SIX MEASUREMENTS, PLUS TIME DELAY AND AC CHARGER PHASE.
 MODE IS CHANGED BY HOLDING IN THE SCAN BUTTON.
5. ALARMS:
 ALARMS LEVELS ARE SET USING THE CONFIGURATION MENU. SEE PRODUCT USER MANUAL FOR DETAILS.
 ALARM RELAYS ARE FORM C CONTACTS.
 RELAY 1: + GROUND FAULT
 RELAY 2: - GROUND FAULT
 RELAY 3: HIGH BATTERY VOLTAGE
 *RELAY 4: LOW BATTERY VOLTAGE, OPEN BATTERY, LOSS OF AC TO CHARGER.
6. TIME DELAY: ALARM DELAY CONFIGURABLE FROM 1 TO 60 SECONDS.
7. RESET:
 IN LATCH MODED THE ALARM IS ONLY CLEARED BY THE FRONT PANEL RESET BUTTON, OR BY REMOTE RESET. REMOTE RESET IS TRIGGERED BY CONNECTING TB2-20 TO TB1-4.
 IN NON-LATCH MODE THE ALARM CLEARS FOLLOWING THE REMOVAL OF THE FAULT CONDITION AFTER THE TIME DELAY.
8. CONTACT RATING 2A AT 120 VAC OR 28 VDC. 25 mA AT 125 VDC.

NOTE: *K4 RELAY IS FAIL SAFE DESIGN. FORM B CONTACTS. RELAY WILL BE ENERGIZED WHEN THE BATTERY MONITOR POWER UP.

9. INPUT/OUTPUT:
 FOUR FORM C ALARM OUTPUTS.
 4-20 mA OR 0-1 mA ANALOG OUTPUT
 MODBUS OR DNP 3 SERIAL INTERFACE.
10. OPTIONAL GROUND FAULT LOCATOR:
 HANDHELD GROUND DETECTOR WITH P/N: 25-1100-GF.
11. DETECTOR PULSE TURNED ON/OFF USING FRONT PANEL.
12. OPTIONAL HIGH IMPEDANCE MEASUREMENT FOR CORROSION DETECTION WITH OPTION CURRENT SENSOR P/N: 25-1100-H1.
13. OPTIONAL ANNUNCIATION PORT J1 FOR EXTERNAL LEDS INDICATING \pm GROUND FAULT, HIGH VOLTAGE, LOW VOLTAGE, EXCESS RIPPLE VOLTAGE AND LOSS OF AC TO CHARGER.
14. FOR DNP AND MODBUS SERIAL COMMUNICATIONS PROTOCOLS SEE THE PRODUCT USER MANUAL.
15. ALARMS SETTING AND OPERATION PARAMETERS SEE TABLE 1.

TABLE 1							
	BATTERY VOLTS	GROUND FAULTS VOLTS	BATTERY HIGH VOLTS	BATTERY LOW VOLTS	RIPPLE VOLTAGE mV	RIPPLE CURRENT mA	TIME DELAY SECONDS
FACTORY SETTING	250	+/-27	277	210	200	10	2.0
RANGE	100-360	+/-27-200	250-300	200-250	5-2000	5-2000	1-60

15-1000-250A-X 0

ARGA CONTROLS ELECTRO SWITCH CORP.			
SIZE	CAGE CODE	DWG NO.	REV
B	50290	15-1000-250A-X	0
SCALE: NTS		CAD FILE: 15-1000-250A-X REV 0	SHEET 2 of 2