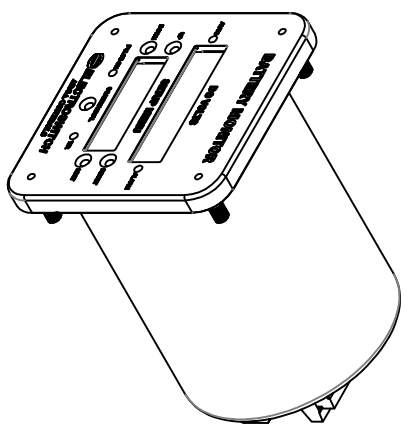
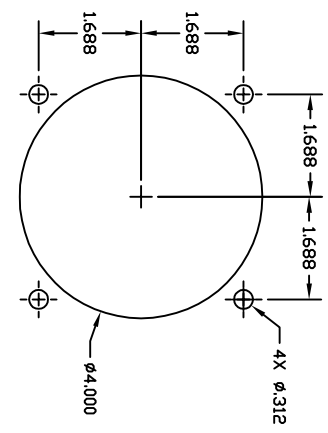
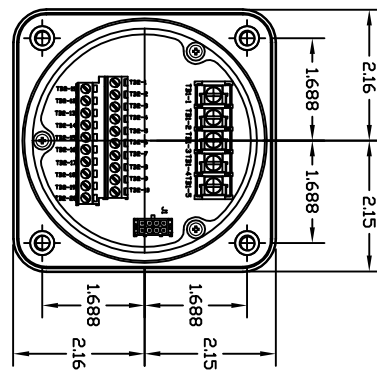
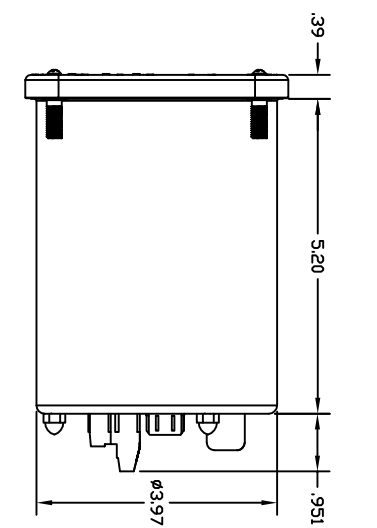
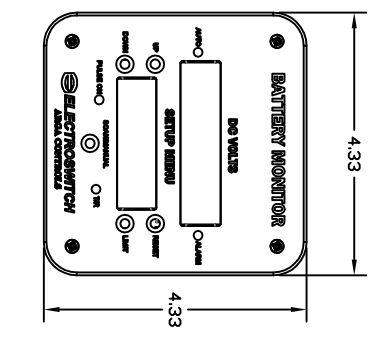


NOTICE: THE DATA IN THIS DOCUMENT INCORPORATES PROPRIETARY RIGHTS OF THE ARGA CONTROLS UNIT OF ELECTRO SWITCH CORP AND ITS SUBSIDIARIES. ARGA CONTROLS IS LOCATED AT 125 PERMANENT DRIVE, WILMINGTON, DE 19804. ANY PARTY ACCEPTING THIS DOCUMENT DOES SO IN COMPLIANCE WITH THE TERMS AND CONDITIONS OF THE PURCHASE ORDER. PART, NOR DISCLOSED TO OTHERS, WITHOUT THE CONSENT OF ARGA CONTROLS UNIT OF ELECTRO SWITCH CORP OR SUBSIDIARY.



| REVISIONS | | | | |
|-----------|--|-----|----------|----------|
| REV | DESCRIPTION | BY | DATE | APPROVED |
| 0 | PRODUCTION RELEASE | ALE | 11/20/17 | ALE |
| C | ECN# 31483 | ALE | 11/8/17 | EM |
| D | ECN# 31481 Added notice on page 1 and new P/N for note 10 and 12 | ALE | 11/9/18 | EM |

| QTY | RECD | DATE | PART OR IDENTIFYING NO. | NOMENCLATURE OR DESCRIPTION | MATERIAL SPECIFICATION | ITEM NO. |
|-----|------|------|-------------------------|-----------------------------|------------------------|----------|
| | | | | | | |

| UNLESS OTHERWISE SPECIFIED: | | APPROVALS | | P A R T S L I S T | |
|---|----------|-----------|----------|-------------------|--|
| DIMENSIONS IN INCHES | DECIMALS | DRAWN | DATE | | |
| TOLERANCES | ANGULAR | MIK | 11/20/17 | | |
| XX ± .XX | ± | CHECKED | DATE | | |
| XX ± .XX | | ENGNG | 11/20/17 | | |
| XX ± .XX | | QA | 11/20/17 | | |
| DO NOT SCALE DRAWING | | | | | |
| UNLESS OTHERWISE SPECIFIED PARTS SHALL NOT EXCEED A MAX SURFACE FINISH OF MACHINED READING OF 125 PER | | | | | |
| ANSI B46.1-1978 | | | | | |
| THIRD ANGLE PROJECTION | | | | | |

| SIZE | DATE | SCALE | CAD FILE | SHEET |
|------|-------|-------|------------|--------|
| B | 50290 | 1/1 | 25-1000_00 | 1 OF 3 |

NOTES: UNLESS OTHERWISE SPECIFIED

GEF EN6-01/12 A

4

3

2

1

SCALE: 1/1

CAD FILE: 25-1000_00

SHEET 1 OF 3

25-1000

A

B

C

D

11 10 9 8 7 6 5 4 3 2 1
BATTERY VOLTAGE/GND METER ALARM RELAY 125VDC

25-1000

SHEET 2 OF 3

1. BATTERY INPUT: 50 TO 180 VDC, 3 VA
2. GROUND RESISTORS: 30,820 KΩ, ±1%
3. DISPLAYED MEASUREMENTS:
 - A: BATTERY VOLTAGE
 - B: +BUS TO GROUND
 - C: -BUS TO GROUND
 - D: GROUND FAULT VOLTAGE (GFV)
 - E: RIPPLE VOLTAGE (RVV)
 - F: RIPPLE CURRENT (W/ OPTIONAL SENSOR) (RIV)
 - G: TIME DELAY (SEC) (TD)
 - H: CHARGER PHASE (1Φ OR 3Φ)
4. SCANNING:
 - IN MANUAL MODE MEASUREMENT IS SELECTED BY BRIEFLY PUSHING THE SCAN/SELECT BUTTON.
 - IN SCAN MODE THE DISPLAY CYCLES THROUGH ALL SIX MEASUREMENTS, PLUS TIME DELAY AND AC CHARGER PHASE..
 - MODE IS CHANGED BY HOLDING IN THE SCAN BUTTON.
5. ALARMS:
 - ALARMS LEVELS ARE SET USING THE CONFIGURATION MENU. SEE PRODUCT USER MANUAL FOR DETAILS.
 - ALARM RELAYS ARE FORM C CONTACTS.
 - RELAY 1: + GROUND FAULT
 - RELAY 2: - GROUND FAULT
 - RELAY 3: HIGH BATTERY VOLTAGE
 - RELAY 4: LOW BATTERY VOLTAGE, OPEN BATTERY, LOSS OF AC TO CHARGER.
6. TIME DELAY: ALARM DELAY CONFIGURABLE FROM 1 TO 60 SECONDS.
7. RESET:
 - IN LATCH MODED THE ALARM IS ONLY CLEARED BY THE FRONT PANEL RESET BUTTON, OR BY REMOTE RESET. REMOTE RESET IS TRIGGERED BY CONNECTING TB2-20 TO TB1-4.
 - IN NON-LATCH MODE THE ALARM CLEARS FOLLOWING THE REMOVAL OF THE FAULT CONDITION AFTER THE TIME DELAY.
8. CONTACT RATING 2A AT 120 VAC OR 28 VDC, 25 MA AT 125 VDC.

9. INPUT/OUTPUT:
 - FOUR FORM C ALARM OUTPUTS.
 - 4-20 MA OR 0-1 mA ANALOG OUTPUT
 - MODBUS OR DNP 3 SERIAL INTERFACE.
10. OPTIONAL GROUND FAULT LOCATOR:
 - HANDHELD GROUND DETECTOR WITH P/N: 25-1100-GF.
 - DETECTOR PULSE TURNED ON/OFF USING FRONT PANEL.
11. OPTIONAL HIGH IMPEDANCE MEASUREMENT FOR CORROSION DETECTION WITH
12. OPTIONAL CURRENT SENSOR P/N 25-1100-H1
13. FAULT, HIGH VOLTAGE, LOW VOLTAGE, EXCESS RIPPLE VOLTAGE AND LOSS OF AC TO CHARGER.
14. FOR DNP AND MODBUS SERIAL COMMUNICATIONS PROTOCOLS SEE THE PRODUCT USER MANUAL.

TABLE 1

| RANGE | BATTERY VOLTS | GROUND FAULTS VOLTS | BATTERY HIGH VOLTS | BATTERY LOW VOLTS | RIPPLE VOLTAGE mV | RIPPLE CURRENT mA | TIME DELAY SECONDS |
|--------|---------------|---------------------|--------------------|-------------------|-------------------|-------------------|--------------------|
| 90-180 | 125 | +/-13 | 142 | 105 | 200 | 10 | 2.0 |

TOLERANCE
 DIMENSIONS SHOWN ARE IN INCHES UNLESS SPECIFIED,
 DIMENSIONS IN PARENTHESES 0 ARE IN MILLIMETERS.
 XX ±.006 CO ±.4 MM DIM OR DIMD IS BASIC.
 XXX±.004 CXX±.1 MM ANGLE ±.007

FINISH -
 DATE: 11-20-17
 DRAWN: EJM
 CHECK: AL

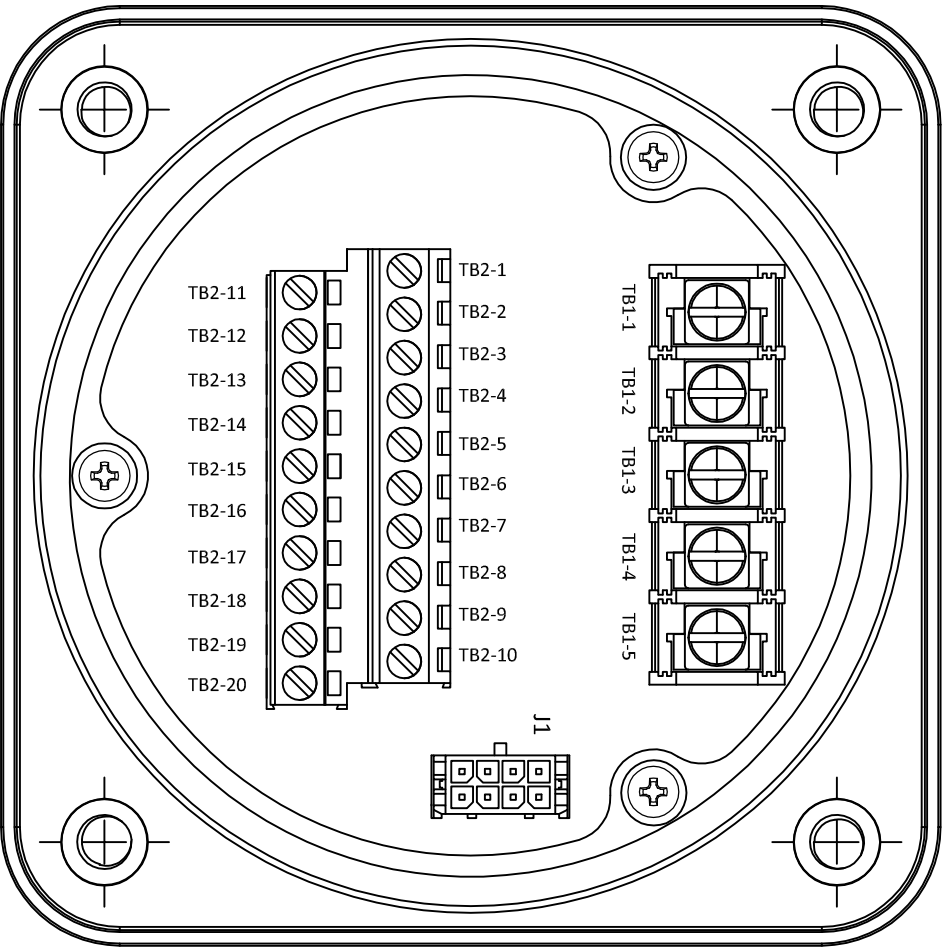


BATTERY VOLTAGE/GND METER ALARM RELAY 125VDC

25-1000

SHEET 3 OF 3

| REAR CONNECTIONS | | |
|------------------|---|--|
| TERMINAL | FUNCTION | |
| TB1-1 | AC LINE | |
| TB1-2 | AC NEUTRAL | |
| TB1-3 | EXTERNAL GROUND | |
| TB1-4 | BATTERY MINUS | |
| TB1-5 | BATTERY PLUS | |
| TB2-1 | RELAY 4 N.O | |
| TB2-2 | RELAY 3 N.C | |
| TB2-3 | RELAY 3 COMMON | |
| TB2-4 | RELAY 3 N.O | |
| TB2-5 | RELAY 2 N.C | |
| TB2-6 | RELAY 2 COMMON | |
| TB2-7 | RELAY 2 N.O | |
| TB2-8 | RELAY 1 N.C | |
| TB2-9 | RELAY 1 COMMON | |
| TB2-10 | RELAY 1 N.O | |
| TB2-11 | RELAY 4 COMMON | |
| TB2-12 | RELAY 4 N.C | |
| TB2-13 | RS485 A | |
| TB2-14 | RS485 B | |
| TB2-15 | RS485 SHIELD | |
| TB2-16 | 4-20 / 0-1 MA OUTPUT | |
| TB2-17 | 4-20 / 0-1 MA RETURN | |
| TB2-18 | CURRENT SENSOR + | |
| TB2-19 | CURRENT SENSOR - | |
| TB2-20 | RESET: SHORT TO BATTERY - TO RESET MONITOR | |



TOLERANCE
 DIMENSIONS SHOWN ARE IN INCHES UNLESS SPECIFIED,
 DIMENSIONS IN PARENTHESES 0 ARE IN MILLIMETERS,
 XX ±.005 CO ±.4 MM DIM OR CIND) IS BASIC.
 XXX±.004 CXX±.1 MM ANGLE 45°

MAT'L : -
 FINISH : -
 DATE: 11-20-2017
 DRAWN: EJM
 CHECK: AL

